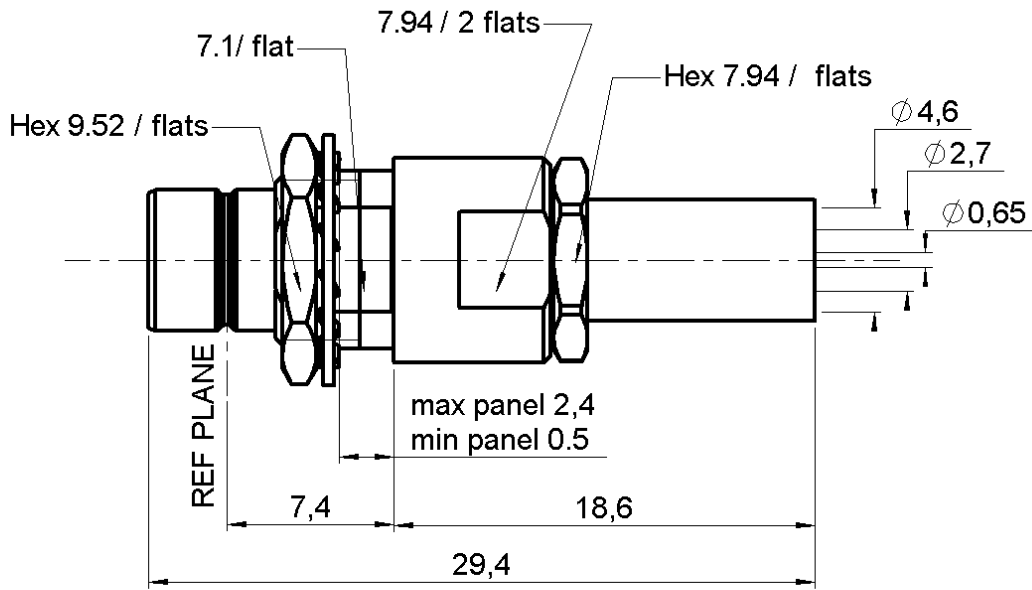


REAR MOUNTING STRAIGHT BULKHEAD

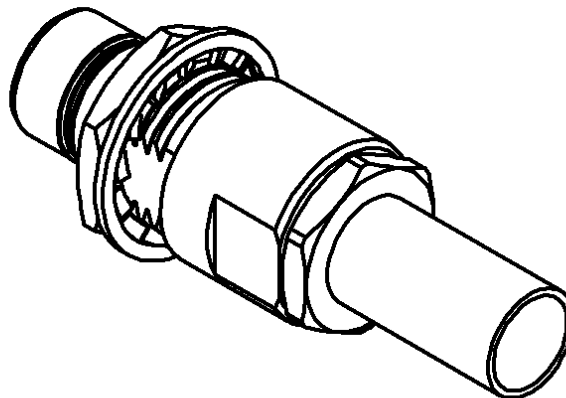
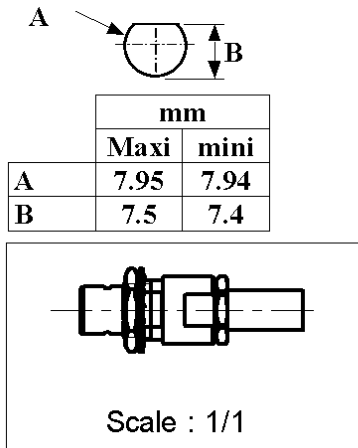
R214.319.200

CRIMP TYPE - CABLE 3.8/95 S

Series : **SMZ**



PANEL CUT OUT



All dimensions are in mm.

COMPONENTS	MATERIALS	PLATINGS (µm)
BODY	BRASS	GOLD 0.2 OVER NICKEL 2
CENTER CONTACT	BERYLLIUM COPPER	GOLD 1.3 OVER NICKEL 2.54 OVER COPPER
OUTER CONTACT	-	3
INSULATOR	PTFE	-
GASKET	-	-
OTHERS PARTS	BRASS	GOLD 0.2 OVER NICKEL 2
-	-	-
-	-	-

Issue : 9936 B

In the effort to improve our products, we reserve the right to make changes judged to be necessary.



REAR MOUNTING STRAIGHT BULKHEAD

R214.319.200

CRIMP TYPE - CABLE 3.8/95 S

Series : SMZ

PACKAGING

Standard	Unit	Other
100	'W' option	Contact us

SPECIFICATION

CABLE ASSEMBLY

ELECTRICAL CHARACTERISTICS

Stripping	a	b	c	d	e	f
mm	2.25	6.90	16.2	0.00	14.0	0.00

Impedance		75	Ω
Frequency		0-2.4	GHz
VSWR	1.20 +	0.000	x F(GHz) Maxi
Insertion loss		0.12	\sqrt{F} (GHz) dB Maxi
RF leakage	- (60	- F(GHz)) dB mini
Voltage rating		500	Veff Maxi
Dielectric withstanding voltage		1500	Veff mini
Insulation resistance		500	M Ω mini

Assembly instruction : **Crimp 10**

Recommended cable(s)
RG 180 BU
RG 195 AU

Cable retention
- pull off **144** N mini
- torque **NA** N.cm

MECHANICAL CHARACTERISTICS

TOOLING

Center contact retention			
Axial force – Mating end		10	N mini
Axial force – Opposite end		10	N mini
Torque		NA	N.cm mini

Part Number	Description	Hexagon
.	.	.
R282.211.000	CRIMPING TOOL	4.52

Recommended torque			
Mating		NA	N.cm
Panel nut		170	N.cm
Clamp nut		100	N.cm
A/F clamp nut		7.940	mm

OTHERS CHARACTERISTICS

Mating life		250	Cycles mini
Weight		0.000	g

ENVIRONMENTAL

Operating temperature		-55/+155	$^{\circ}$ C
Hermetic seal		NA	Atm.cm3/s
Panel leakage		NA	

Issue : 9936 B

In the effort to improve our products, we reserve the right to make changes judged to be necessary.

